



'Laundreville' 26 Whaling Road North Sydney

bedrooms: 3 bathrooms: 2.5 car parking: 2

Grandeur, flexibility and London Belgravia influences are just some of the captivating features of this substantial freestanding residence. Sensitively combining ornate original Victorian period details with smart modern essentials this proudly landmark positioned home is in a quiet leafy, harbourside cul de sac offering rarity and beauty.

- Entrance via secure reception foyer with elegant water feature
- Open plan formal living, dining & music rooms (2 jetmaster fireplaces)
- Separate sitting / TV room
- Three double bedrooms with built-ins (master with glass roofed ensuite)
- Secluded, private Parterre garden
- Spacious granite galley kitchen with walk-in pantry
- Sun drenched north facing dining terrace
- Ornate pressed metal ceiling, polished wooden floors, indoor/outdoor sound system
- Guest powder room, internal laundry, numerous sunny balconies
- Internal access from two separate magic eye garages
- Wine cellar, abundant storage spaces, back to base security
- Harbour and bridge cameos

www.suttonplacerealty.com.au

FOR SALE

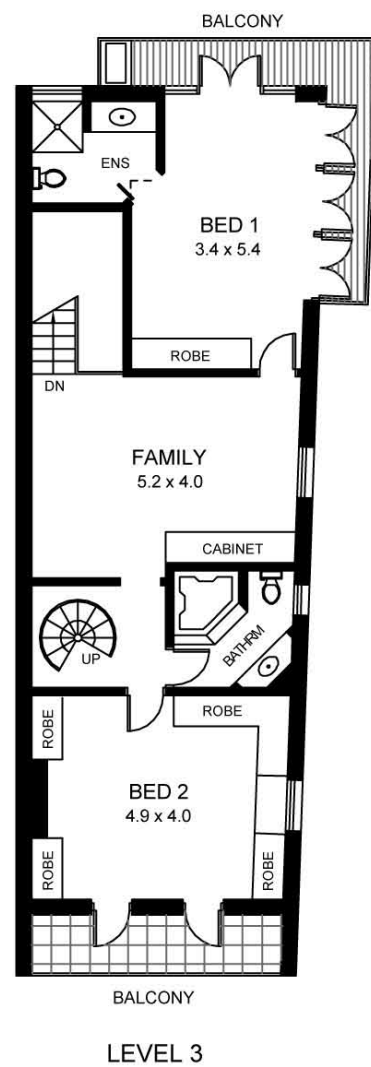
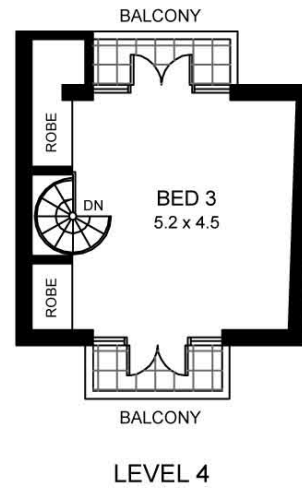
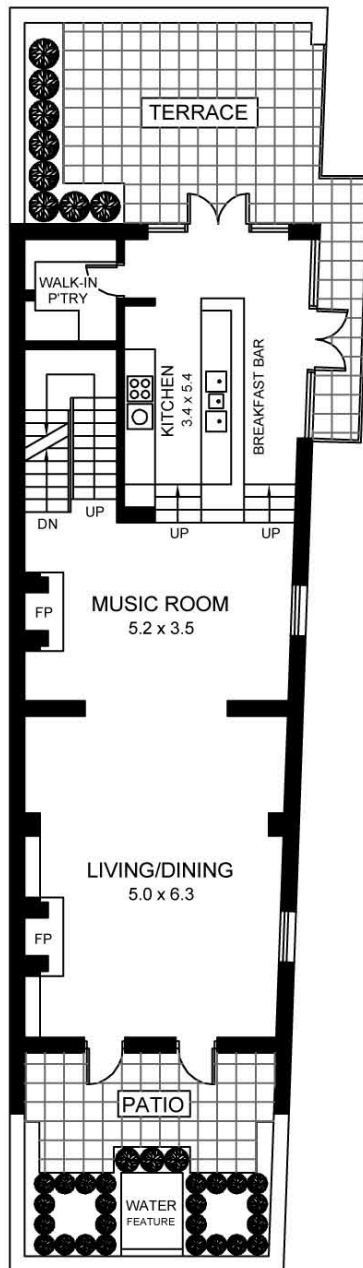
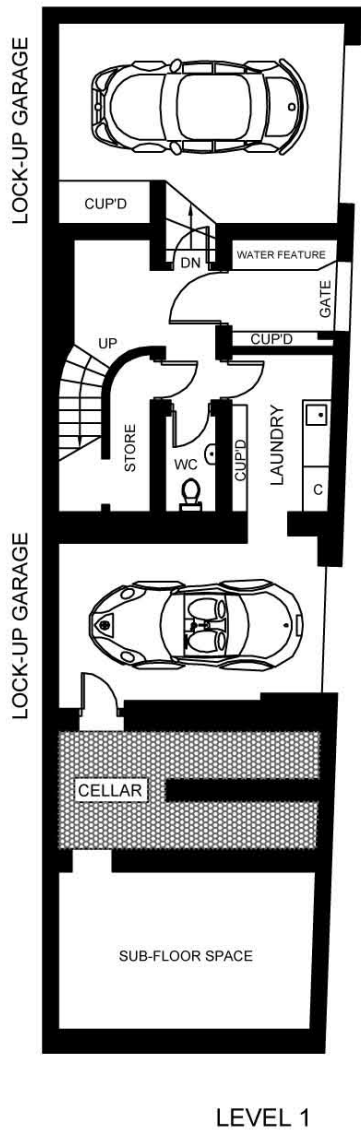
inspect: by private appointment

details: colm@suttonplacerealty.com.au

Colm O'Sullivan 0418 614 322



bespoke property consultants



PLANS ARE ONLY INDICATIVE OF LAYOUT. DIMENSIONS ARE APPROXIMATE. PREPARED BY GILESVALE PTY LTD 0412 863 888



The information contained herein has been obtained from sources we deem to be reliable. However we cannot guarantee its accuracy & interested persons should rely on their own enquiries.